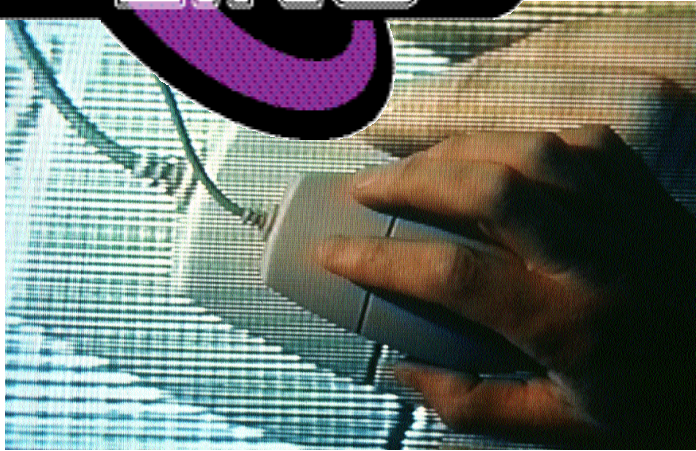


CHANNEL 68

LINC TV

# THE FUTURE



With a strong business plan, dedicated professionals, a firm commitment to the community and exciting prospects to offer, LINC 68 is up and running full steam ahead. LINC TV is currently transmitting 6 days a week, 8 hours a day, with an intention to grow to a full time presence with the support of the community.

Plans are currently under way to broaden our range to become a truly regional station reflecting the activities and needs of the North Coast community. This would include areas such as Ballina and Byron Bay , giving even greater value to our sponsors and more exposure to our local program producers.

With a host of new locally produced programs, LINC TV is fulfilling it's commitment to you, the local community, by providing an alternative to the mainstream stations with entertainment made by local people around familiar places. With strong ties to other community television stations around Australia, LINC also has access to a host of exciting and original locally produced programs from other states. This gives us a nice balance between our own material and high rating material from other regions of the country to broadcast to our viewers.



LINC has established a Memorandum of Understanding with 2NCR FM and North Coast CAMERA, to promote and support the development of community and industry based media production and training. By sharing our infrastructure and resources, running costs are greatly reduced and our expertise shared. While increasing productivity and sustainability we can also pass on our reduced costs to you as a station sponsor.

**IT'S YOUR COMMUNITY, IT'S YOUR STATION,  
BECOME THE MEDIA....  
GET INVOLVED NOW!**

[www.linctv.org.au](http://www.linctv.org.au)

Phone 6622 0144